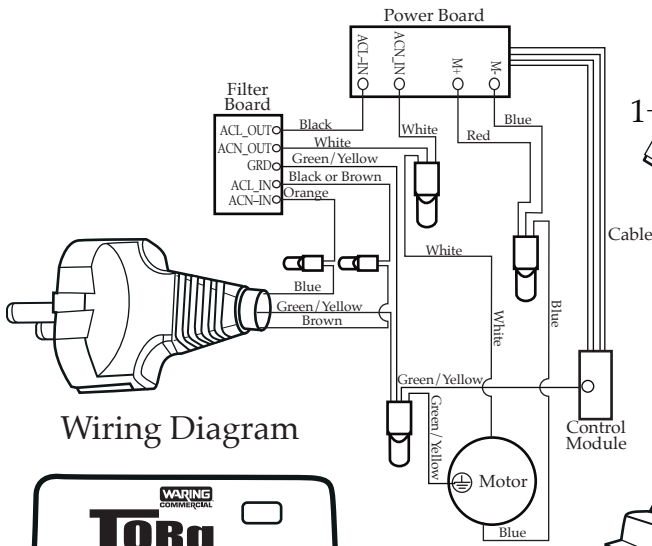


WARING COMMERCIAL

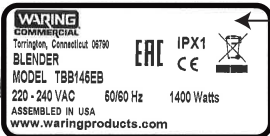
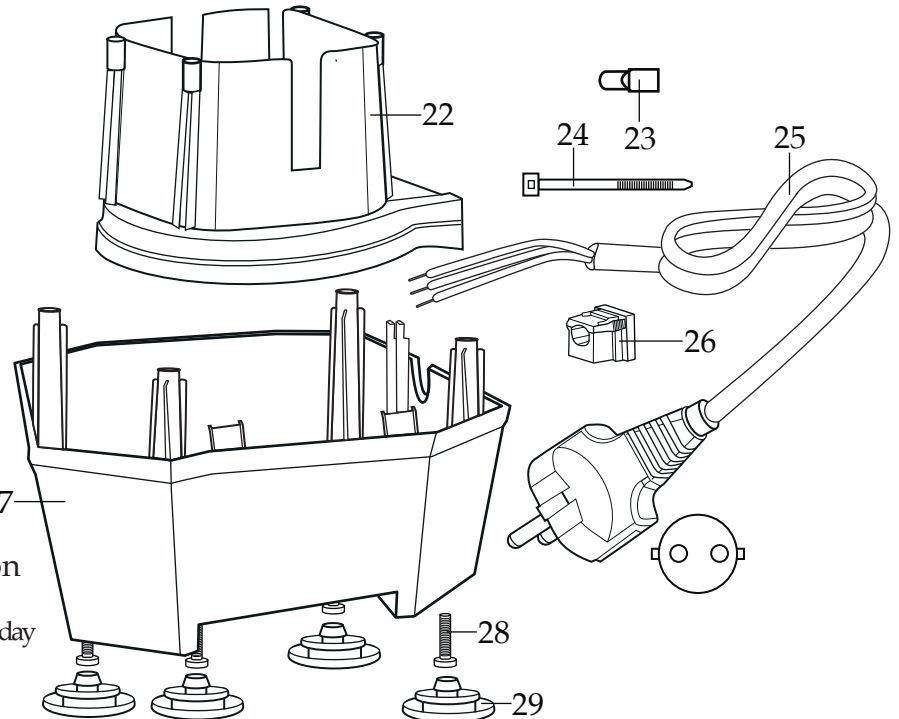
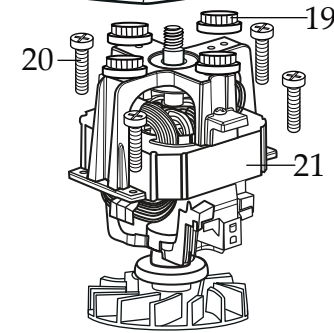
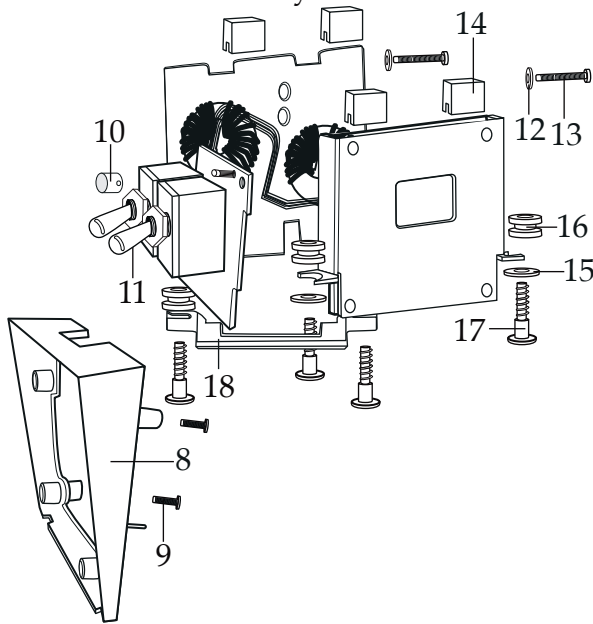
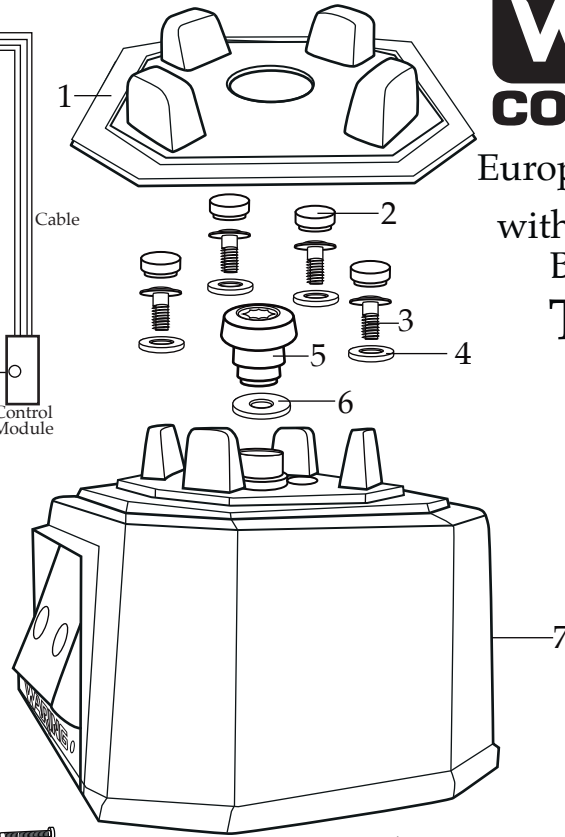
Europe TORq 2.0 Blender with 2 Toggle Switches Base Unit ONLY TBB145EB



Wiring Diagram



035871
Control Panel Overlay



Date Code Location
YY|MM|DD
year year | month month | day day

Illustration#	Part#	Description
1	035885 035091	Jar Pad (<i>changed after 6/20/2018</i>) Jar Pad (use 035885)
2	035085	Hole Plug (4 required)
3	034275	Sems (4 required)
4	034273	B Gasket (4 required)
5	037034 035251	Drive Coupling (<i>on units after 11/15/2019</i>) Drive Coupling
6	037033	Coupling Washer (<i>on units after 11/15/2019</i>)
7	503460-145-E	Top Housing Assembly
8	035083	Control Housing Back Bezel
9	035090	Screw (2 required)
10	035253	LED Lens
11	035163	Control Panel Assembly
12	035255	Washer (2 required)
13	035089	Screw (2 required)
14	034900	PCB Cushion (4 required <i>on units after 8/14/2018</i>) (2 required)
15	013604	Washer (2 required)
16	034904	Rubber Grommet (4 required)
17	034902	Sems (4 required)
18	035894	Control Board Bracket
19	034272	A Gasket (4 required)
20	034274	Screw (4 required)
21	035816	Chiaphua Motor No Sensor
22	503483	Motor Housing with Dampeners
23	012409 019123	Small Crimp Connectors (2 required) Large Crimp Connector (3 required)
24	013731	Cable Ties (6 required)
25	017948	Cordset
26	033619	Strain Relief
27	035079 503480	Bottom Housing ONLY Bottom Housing Assembly with Feet
28	034274	Screw (4 required)
29	035088	Foot (4 required)